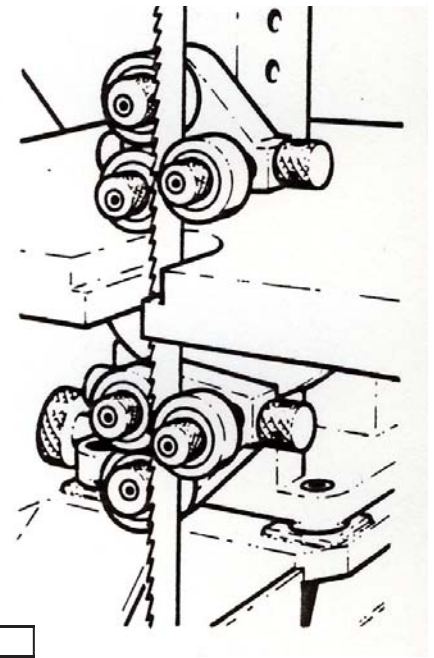


Universal Roller Blade Guides

The universal roller blade guides are the most suitable for high speed sawing with light pressure and can be used with various widths of blades.

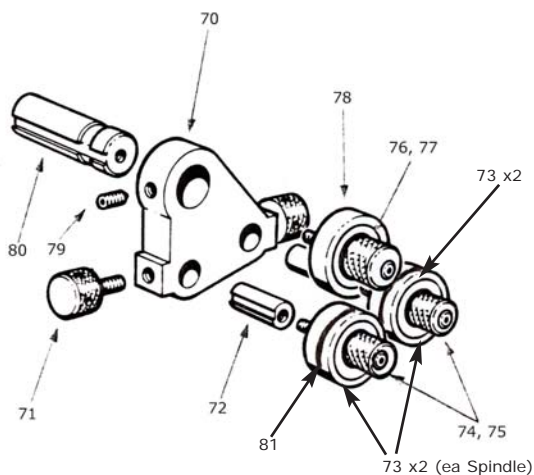
To set guides, adjust thrust rollers (item 78) to touch back of blade. Slacken off thumb screws (item 71) and adjust rollers (item 73) so they are set back clear of the saw teeth, and turn eccentric bushes (item 74) so the rollers support the saw blade. The guides utilise standard location points on the machine, and are therefore fully interchangeable with all other blade guides.



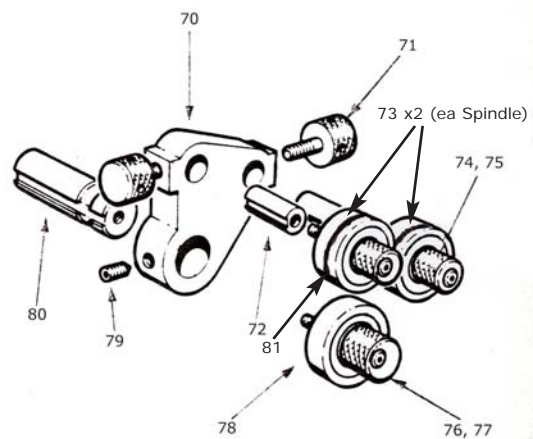
ITEM	PART NO.	DESCRIPTION	QTY
	SM1559/A	UPPER ASSEMBLY	1
	SM1559/B	LOWER ASSEMBLY	1
70	7467	GUIDE BODY	2
71	2535	THUMB SCREW	4
72	7466	GUIDE ROLLER SPINDLE	4
73	BO2021	BALL BEARING	8
74	2458	ECCENTRIC GUIDE ROLLER BUSH	4
75	BO5012	CAP SCREW	4
76	2459	ECCENTRIC GUIDE ROLLER BUSH	2
77	BO5010	CAP SCREW	2
78	BO2002	BALL BEARING	2
79	BO5194	CAP SCREW	2
80	2456	THRUST ROLLER SPINDLE	2
81	BO5919	WASHER	4
	SM303	BEARING + SPINDLE ASSEMBLY GUIDE ROLLER (ITEMS 73x2, 74, 75 & 81)	2 PER ASSEMBLY
	SM304	THRUST ROLLER SPINDLE (ITEM 76,77,78)	1 PER ASSEMBLY

Please note if item 73 bearing is x1 only on your system the bearing is obsolete (SM303 is required to replace)

Universal Roller Guide- Upper - SM1559/A



Universal Roller Guide- Lower - SM1559/B



MACHINE SPARES LTD.

Garratt St. Brierley Hill, West Midlands, DY5 1JU.

Tel: 0870 870 2550 fax: 0870 870 2660